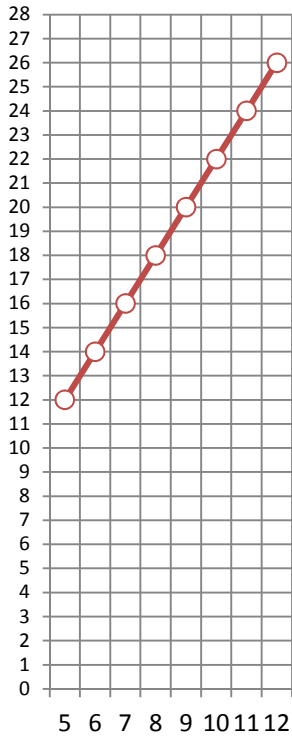
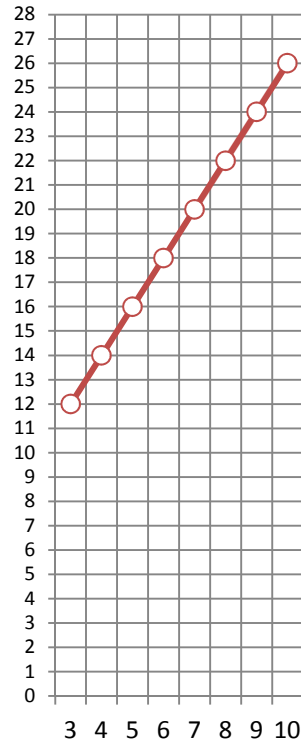


1).



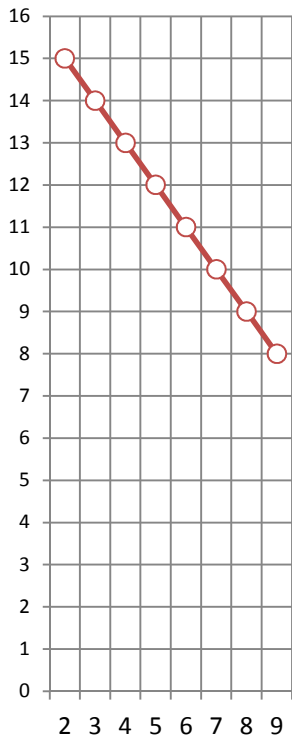
In	Out
5	12
6	
7	16
8	
9	
10	22
11	

2).



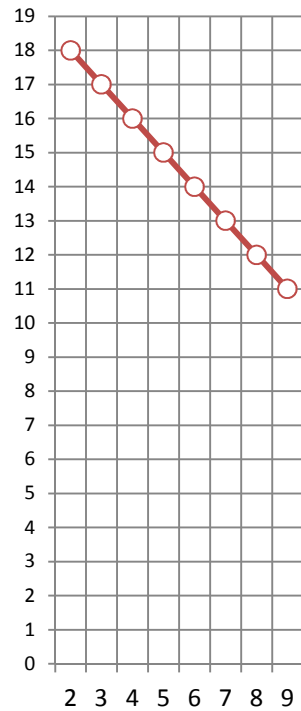
In	Out
3	12
4	
5	16
6	
7	
8	22
9	24

3).



In	Out
3	
4	
5	12
6	
7	10
8	
9	8

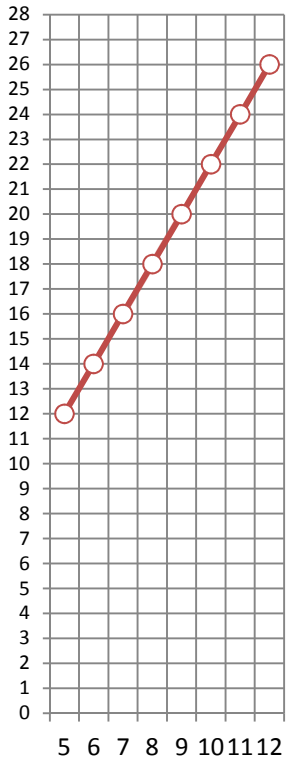
4).



In	Out
3	
4	16
5	
6	14
7	13
8	
9	

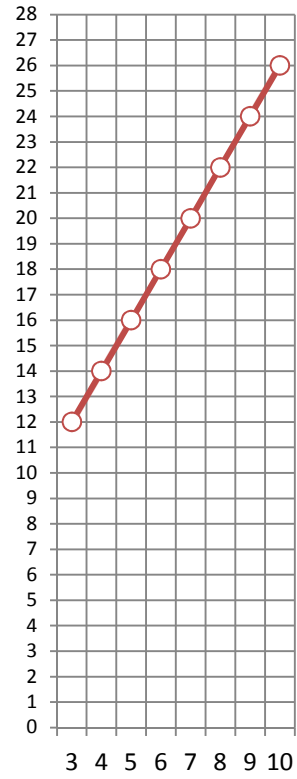
Answers

1).



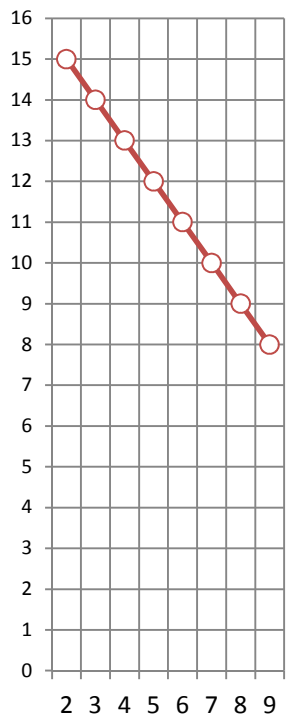
In	Out
5	12
6	14
7	16
8	18
9	20
10	22
11	24

2).



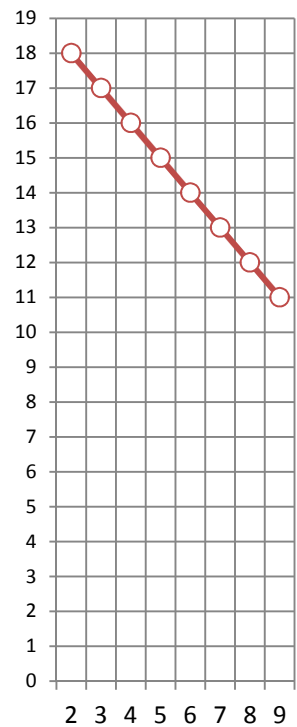
In	Out
3	12
4	14
5	16
6	18
7	20
8	22
9	24

3).



In	Out
3	14
4	13
5	12
6	11
7	10
8	9
9	8

4).



In	Out
3	17
4	16
5	15
6	14
7	13
8	12
9	11